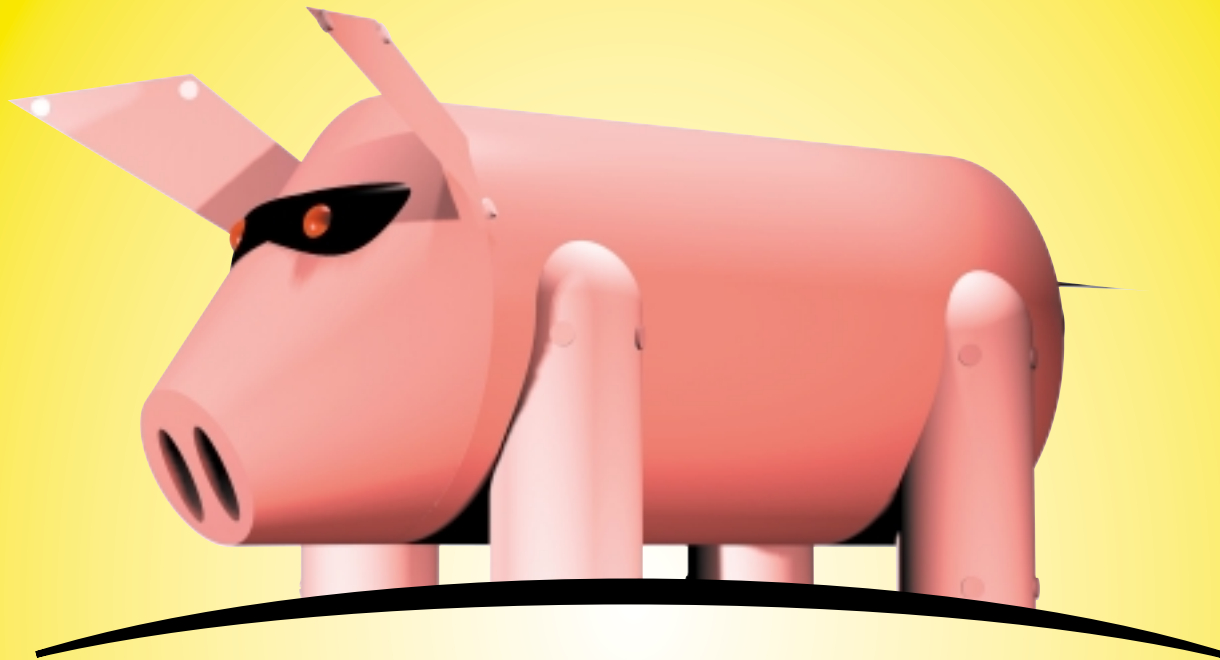


**LASER SHAFT ALIGNMENT AT A PRICE  
THAT WON'T BREAK THE PIGGY BANK!**



# SHAFT HOG™

## SHAFT HOG LASER SHAFT ALIGNMENT TOOL

### Benefits of precision alignment:

- Reduced vibration levels
- Extends bearing and seal life
- Less unscheduled downtime
- Longer MTBF

### Advantages of the Shaft Hog:

- Detector accuracy (0.0001")!
- Unique laser line
- Fast setup
- Easy operation

- Live values at all times
- Shows exactly what to do
- From small shafts to big ones
- **FREE**, downloadable software
- Complete training manual



### SPECIFICATIONS

#### Measuring Units

Housing material: ABS plastic  
 Type of laser: Diode laser  
 Laser Wave Length: 670-675 nm  
 Laser class: 2  
 Maximum laser power: 1 mW  
 Maximum distance  
 between measuring units: 2.8 ft (850 mm)  
 Type of detectors: Single-axis PSD  
 Cable length: 5.2 ft (1.6 m)  
 Dimensions: 3.4 x 3.1 x 1.5 in (87 x 79 x 39 mm)

#### Display Unit

Housing material: ABS plastic  
 Display type: LCD 1.4 x 1.9 in (35 x 48 mm)  
 Battery type: 2 x 1.5V "C" Alkaline (LR14)  
 Operating time: 20 hours continuous operation  
 Auto power off: After 1 hour if no keys are pressed  
 Displayed resolution: 0.1 mil (0.0001"); (0.01 mm in metric mode)  
 Dimensions: 9.1 x 3.2 x 2.4 in (230 x 81 x 62 mm)

#### Complete System

Shaft diameter range with chain: 18" maximum  
 Accuracy of system: <2% +/-0.00039 in  
 Temperature range: 32-140 °F (0-60 °C)  
 Operating humidity: Non-condensing  
 Weight in case: 10 lbs

530G Southlake Boulevard • Richmond, VA 23236

Phone: (804) 379-2250 • FAX: (804) 379-0189

Or visit us at [www.shafthog.com](http://www.shafthog.com)

**VibrAlign**